



中文



ENGLISH



国家高新技术企业



# SAYEAH新岳®

塑料片材挤出/热成型机专业制造商  
Professional Manufacturer of Plastic Sheet  
Extrusion Line & Thermoforming Machines

SAYEAH新岳  福鑫龙

浙江新岳机械有限公司  
ZHEJIANG SAYEAH MACHINERY CO.,LTD.

浙江福鑫龙包装设备有限公司  
ZHEJIANG FUXINLONG PACKAGING MACHINERY CO.,LTD.

地址：浙江省温州市平阳县孙楼工业区  
Add: Sunlou Industrial Zone, Pingyang County, Wenzhou  
City, Zhejiang Province

Tel:0086-577-65572988  
Http://www.sayeahmachinery.com  
E-mail: info@sayeahmachinery.com

© 浙江·新岳 (ZHEJIANG SAYEAH) 版权所有 2022版

开启塑料挤出/成型  
制造工业4.0

OpenPlastic Sheet Extrusion &  
Thermoforming Manufacturing  
Industry 4.0

SAYEAH新岳

品质铸造 新岳品牌

Quality Builds SAYEAH Brand





SAYEAH新益

## CLEAN ASSEMBLY WORKSHOP

整洁的装配车间

## VALUE OF QUALITY CONTROL

### 品质控制的价值

Quality is our invariable topic, is the basement of enterprise's development. From the beginning of enterprise start, we especially focus on quality. Plastic Sheet Extrusion & Thermforming machines which we manufactured, firstly get ISO9001 International Quality System Certification, later get CE certification, meanwhile, get multi-item of practical new type patent and invention patent.

质量是我们永恒的追求，是企业发展的根本。创业至今，企业十分重视质量工作。所生产的塑料挤出成型机械等设备，先后通过ISO9001国际质量管理体系认证和CE认证，并获得国家专利局多项实用新型专利。





## 企业简介

## COMPANY BRIEF INTRODUCTION

浙江新岳机械有限公司坐落于浙江温州，创立于2001年，经过二十余年的刻苦钻研，现已成为一家集软件研发、机械研发制造、营销于一体的智能设备专业制造厂商。公司目前主要生产多工位热成型机，制杯成型机，片材挤出机，吸塑机以及成套包装设备。规格齐全，配置先进，处于国际同类产品领先地位。

本公司技术力量雄厚，具备良好的售后服务体系，并可在售后安装调试、人员培训、模具制作、及客户特殊定制等方面为客户提供全方位系统整套专业的服务方案。公司一直以来注重团队建设及人才培养体系，打造刻苦钻研的技术研发梯队，以自我超越、努力深耕的态度，凭借勤奋专注精神的工匠精神，成就新岳人技术领先、品质第一的理念。

目前本公司的产品已远销世界六十多个国家及地区，其中包括世界最大的乳制品包装商，欧洲知名巧克力包装商，东南亚知名化妆品及食品包装商、中东知名花卉园林公司、北欧沃尔沃及东欧福特汽配供应商以及各地食品及日用品包装企业。

新岳人将一如既往地勤奋奋进，打造世界一流的材料热成型设备的出始终不会更改。追求国际先进水平，满足客户期待，是新岳企业的质量方针。挑战自我，创造卓越，是新岳企业的经营理念。新岳人真诚欢迎新老客户惠顾，愿与过欧以外世界友人共同发展，共创辉煌！让世界爱上中国造！

Zhejiang Sayeah Machinery Co., Ltd. located in Wenzhou, Zhejiang Province, was founded in 2001. After more than 20 years of hard research, it has become a set of software development, mechanical research and development, manufacturing, marketing in one of the professional manufacturers of intelligent equipment. At present, the company mainly produces multi-station thermoforming machine, cup thermoforming machine, vacuum forming machine, sheet extruder and complete sets of packaging equipment. Complete specifications, advanced configuration, in the international leading position of similar products.

The company has strong technical force, has a good after-sales security system, and can provide customers with a complete set of professional service programs in all aspects of after-sales security system, and can provide customers with a complete set of professional service programs in all aspects of after-sales installation and debugging, personnel training, mold making, and customer special customization. The company has always been focusing on team building and talent training system, creating a hard-working technology research and development echelon, with the attitude of self-transcendence and hard work, replying on the spirit of hard-working and focused craftsman, achieving the concept of Sayeah people's leading technology and quality first.

At present, our products have been widely sold in more than 60 countries and regions in the world, including the world's largest dairy packers, famous chocolate packers in Europe, famous cosmetics and medicine packers in Southeast Asia, famous flower and garden companies in the Middle East, Volvo in northern Europe and Ford Auto parts suppliers in Eastern Europe, as well as food and daily necessities packaging enterprises all over the world.

Sayeah people will continue to work hard as always to build world-class sheet thermoforming equipment. The quality policy of Sayeah enterprise is to pursue the international advanced level and meet the customer's expectation. To challenge ourselves to patronize, is willing to work with friends at home and abroad to develop and create brilliant! Let the world love made in China!



SAYEHA 新岳



# 持诚信互利共荣·秉责任携手共进

INTEGRITY MUTUAL BENEFIT AND COMMON PROSPERITY WORK TOGETHER BY RESPONSIBILITY

在过去二十年里，我们参加了中国国际橡塑展，广交会，K展等国内外专业的塑料机械展览会。我们的产品销往世界各地：如瑞典，罗马尼亚，马其顿，俄罗斯，加拿大，秘鲁，墨西哥，中东，东南亚，非洲等。

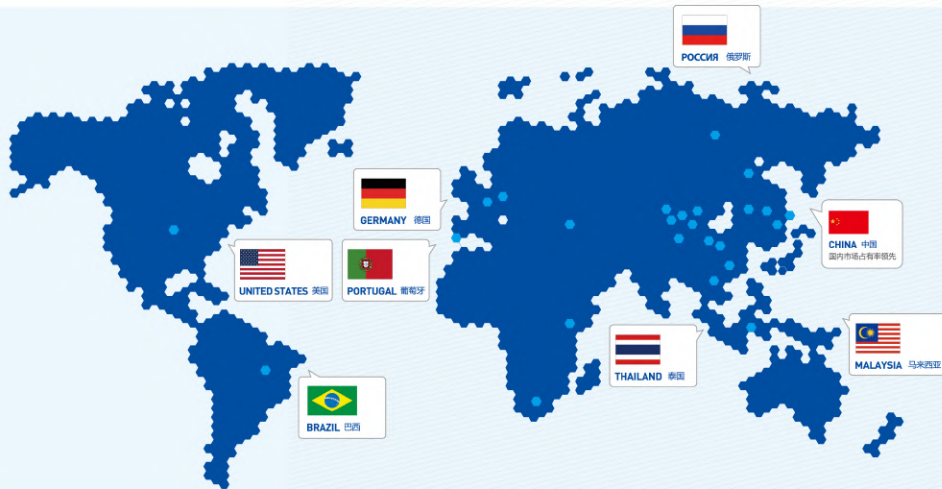
In the past twenty years, we participated in Chinaplas Fair, Canton Fair, K Show and other professional plastic machinery exhibition at home and abroad. Our products are sold around the world, such as, Sweden, Romania, Macedonia, Russia, Canada, Peru, Mexico, Mideast, Southeast Asia, Africa and etc.

## 5大洲，61个国家，690个客户

5 continents, 61 countries, 690 customers

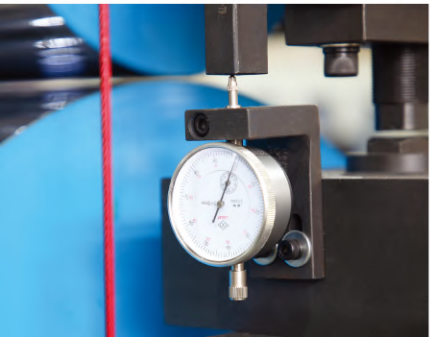
## 与全球客户共同成长

## GROWING WITH GLOBAL CUSTOMERS



Http://www.sayeahmachinery.com  
E-mail: info@sayeahmachinery.com

**SAYEAH新岳** 



## Vision

Become the top ten in the global industry

**新岳愿景**  
成为全球行业十强



## Mission

Create a fair entrepreneurship platform  
Improve employee happiness index  
Continuously create value for customers

**新岳使命**  
共创公平创业平台  
提高员工幸福指数  
持续为客户创造价值

## Values

Honesty and trustworthiness, Customer first  
Enterprising innovation, Learning and sharing  
Unity and hard work, Love and dedication

**核心价值观**  
诚实守信, 客户至上  
进取创新, 学习分享  
团结拼搏, 爱岗敬业

## Product

Focus on thermoforming machine and supporting equipment. Provide one-stop solutions for thermoforming equipment, process and technology

**专注热成型机及配套设备**  
提供热成型设备、工艺、技术  
整厂一站式解决方案

**让我们做得更好!**  
Let's make things better!

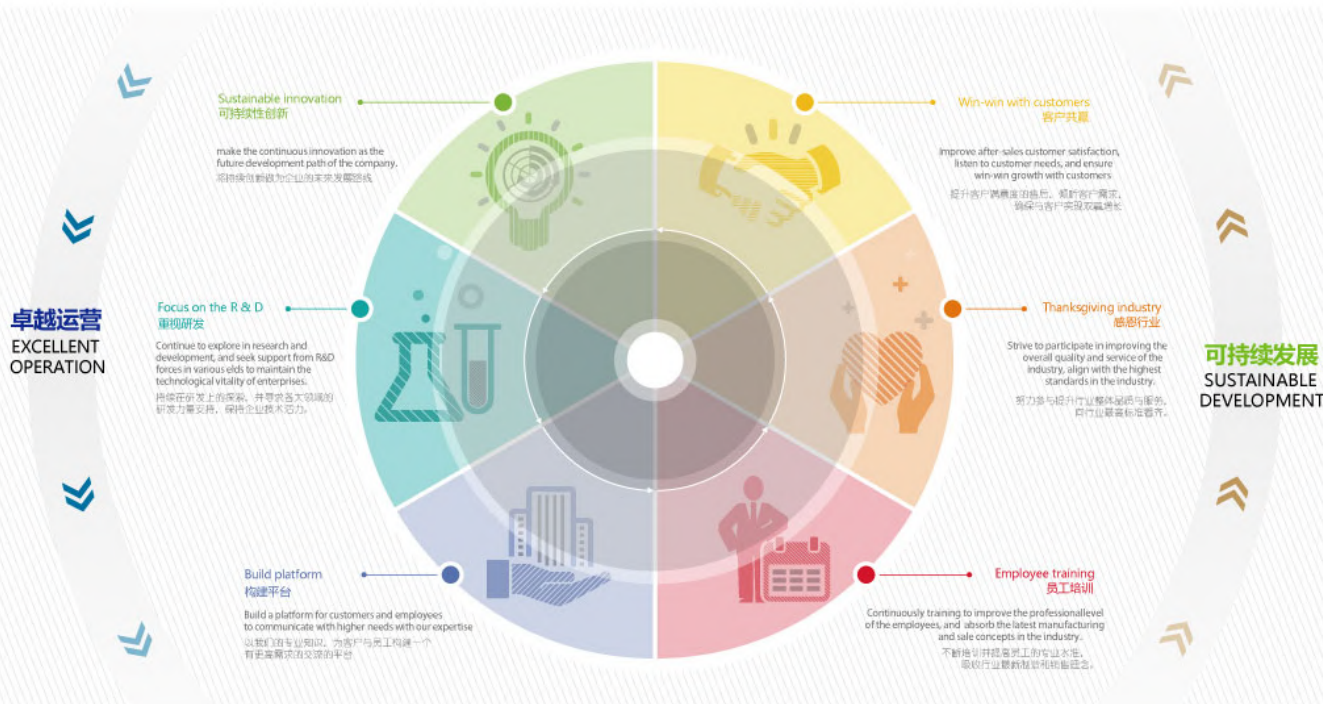
## Quality

SAYEAH escorts the products' leading position in the world by using standard material, regulating the manufacturing process, inspecting the process in high precision, controlling the progress strictly and improving continuously.

**质量方针**  
使用标准材料, 规范制造工艺, 高精度的检测流程, 严格过程控制, 持续改进创新, 护航产品世界领先。

## 奉行精品战略·始终追求进步

Pursuing a boutique strategy  
Always pursuing progress



# FSCT600/400 SERIES

Fully Automatic Pressure Multi-Station Thermoforming Machine

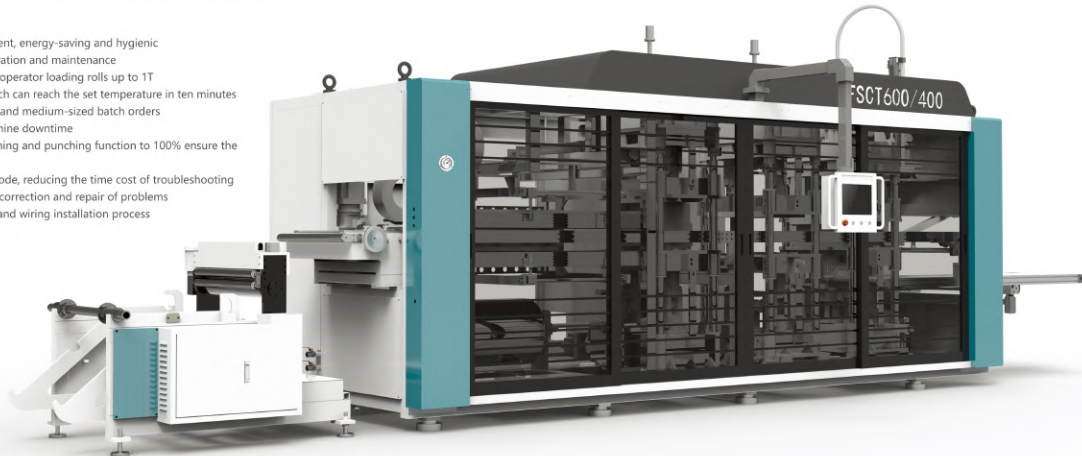
## 全自动正压多工位成型机

### 结构特点 / Major Construction Features

1. 欧洲设计，适合多样化产线制造，安全，高效，节能，卫生
2. 结构紧凑运行平稳高效，便于日常操作维护
3. 放卷工位电动抬料，双工位放卷，允许单人上料可达1T的卷材
4. 快速且精准的温控系统（误差±1度），十分钟内可达到设定温度
5. 可使用各种材质，适用于各种中小型批量的订单
6. 可快速正面换模，模具更换安全简便，减少机器停机时间
7. 收缩性强的材质可采用单工位模内成型冲切功能，百分百保证模具切边精度
8. 高性价比、低故障率，异常警报反应模式，降低故障排查的时间成本
9. 远程维护，瞬时判定障碍讯息，快速校正修复问题
10. 电柜一体化设计，简化机器组装以及接线安装流程



1. European design, suitable for diversified production lines, safe, efficient, energy-saving and hygienic
2. Compact structure, stable and efficient operation, easy for daily operation and maintenance
3. Unwinding station electric lifting, double roll holder, allow for single operator loading rolls up to 1T
4. Fast and accurate temperature control system (error ± 1 degree), which can reach the set temperature in ten minutes
5. Various materials can be used, which is suitable for all kinds of small and medium-sized batch orders
6. Quick front mold change, safe and simple die change, reducing machine downtime
7. Materials with strong shrinkage can adopt the single station die forming and punching function to 100% ensure the die edge cutting accuracy
8. High cost performance, low failure rate, abnormal alarm response mode, reducing the time cost of troubleshooting
9. Remote maintenance, instant judgment of obstacle messages, rapid correction and repair of problems
10. Integrated design of electric cabinet to simplify machine assembly and wiring installation process



### 主要技术参数 / Main Technical Parameters

机组型号	Model	FSCT600/400-2	FSCT600/400-3	FSCT600/400-4
工位个数	Qty of Stations	2	3	4
最大成型面积	Max. Forming Area	600×400mm		
最大成型深度与高度	Max. Forming Depth	80/40mm		
最大片材宽度	Max. Sheet Width	640mm		
最大片材卷径	Max. Sheet Roll Dia.	1100mm, 1T		
片材厚度范围	Sheet Thickness Range	0.15-2mm		
最大空载速度	Max. Dry Cycle Speed	35 Cycles/min		
总功率	Overall Power	85KW	90KW	95KW
外形尺寸	Dimension(L×W×H)	7600×2100×3200mm	8200×2100×3200mm	9000×2100×3200mm
重量	Machine Weight	4T	5.5T	7T

▲注：数据如有更改，恕不另行通知 (Notes: If any change of data, we will not notify further)



# FSCT680/450 SERIES

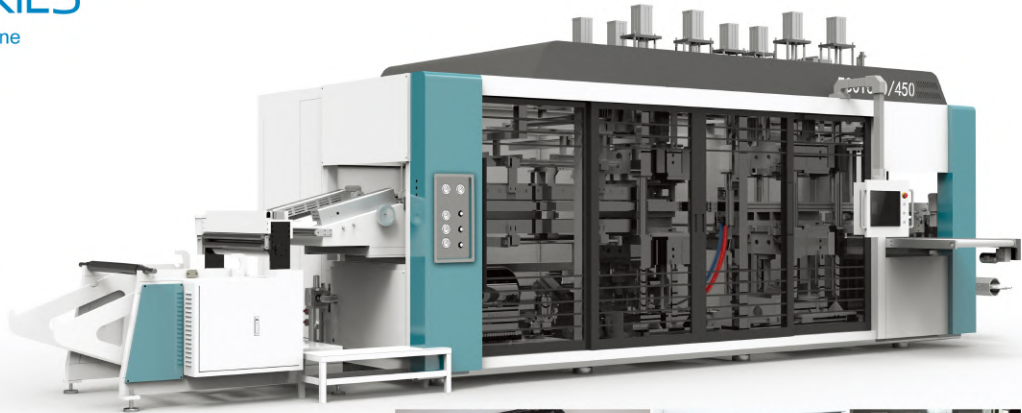
Intelligence Multi-Station Thermoforming Machine

## 智能多工位热成型机

### 结构特点 / Major Construction Features

1. 外观设计, 适合多样化产线制造, 安全, 高效, 节能, 卫生
2. 放卷工位电动抬料, 双工位放卷, 允许单人上料量达1T的卷材
3. 易于操作的人机界面, 系统具有远程控制的功能
4. 快速且精准的温控系统 (误差±1度), 带有热炉检测物料及气源低压保护系统
5. 智能操作, 整机带有配方储存, 不停机自动调节功能
6. 可与国内外大多知名品牌的机型实现模具共用, 零顾虑配合生产
7. 快速换模系统, 可方便快速精准安全换模, 减少机器停机时间
8. 成型工位具有伺服拉伸功能, 大大降低长期模具成本
9. 收缩性强的材质可采用单工位模内成型冲切功能, 百分百保证模具刃边精度
10. 高精度成型裁切技术, 达到高速控制, 低磨损的完美成型裁切性能
11. 可选装多种款式的自动堆叠技术, 符合您进一步的生产需求
12. 高性价比, 低故障率, 异常警报反应模式, 降低故障排查的时间成本
13. 远程维护, 瞬时判定故障讯息, 快速校正修复问题
14. 堆垛工位可定制化, 简化了复杂零件的堆垛, 便于满足进一步的生产需求
15. 电柜一体化设计, 简化机器组装以及接线安装流程

1. European design, suitable for diversified production lines. Safe, efficient, energy-saving and hygienic
2. Unwinding station electric lifting, double roll holder, allow for single operator loading rolls up to 1T
3. Operator-friendly HMI, and the system has the function of remote connection
4. Fast and accurate temperature control system (error  $\pm 1$  degree), with hot furnace detection material drop and air source low pressure protection system
5. Intelligent operation, the whole machine is equipped with formula storage and automatic adjustment without shutdown
6. It can share molds with models of most well-known brands at home and abroad, and cooperate with existing production lines
7. Fast mold change system, which can facilitate fast, accurate and safe mold change and reduce machine downtime
8. The forming station has servo motor stretching function, which greatly reduces the long-term mold cost
9. Materials with strong shrinkage can adopt the single station in-mold-forming-cutting function to 100% ensure the edge cutting accuracy
10. High precision forming and cutting technology to achieve the perfect forming and cutting performance of high-speed control and low wear
11. Various styles of automatic stacking technology can be selected to meet your further production needs
12. High cost performance, low failure rate, abnormal alarm response mode, reducing the time cost of troubleshooting
13. Remote maintenance, instant judgment of obstacle messages, rapid correction and repair of problems
14. Under any forming scheme, the clamping frame and plug assist function can be used alone or at the same time, greatly simplify the mold structure
15. Integrated design of electric cabinet to simplify machine assembly and wiring installation process



### 主要技术参数 / Main Technical Parameters

机组型号	Model	FSCT680/450-2	FSCT680/450-3	FSCT680/450-4
工位个数	Qty of Stations	2	3	4
最大成型面积	Max.Forming Area		680 x 450mm	
最大成型深度与高度	Max.Forming Depth		140/140mm	
最大片材宽度	Max.Sheet Width		720mm	
最大片材卷径	Max.Sheet Roll Dia.		1100mm,1T	
片材厚度范围	Sheet Thickness Range		0.15~2mm	
最大空载速度	Max.Dry Cycle Speed		55Cycles/min	
总功率	Overall Power	110kw	120kw	130kw
外形尺寸	Dimension(L×W×H)	8800×2300×2500mm	9500×2300×2500mm	10500×2300×2500mm
重量	Machine Weight	8T	13T	17T

▲注: 数据如有更改, 恕不另行通知 (Notes: If any change of data, we will not notify further)

# FSCT820/650 SERIES

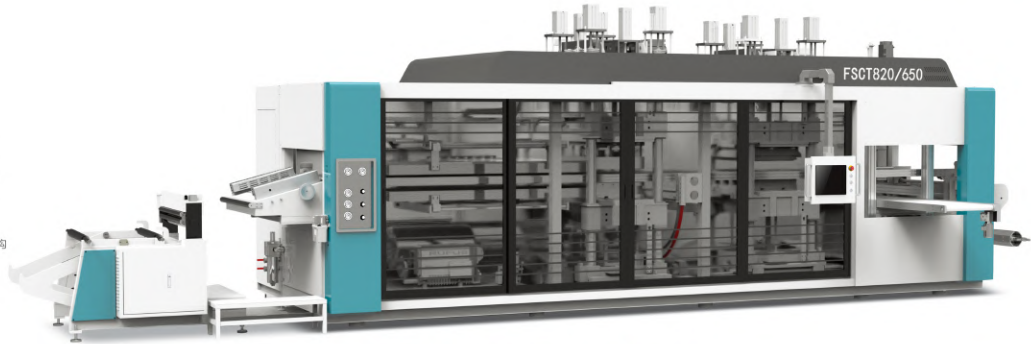
Intelligence Pressure and Vacuum Multi-Station Thermoforming Machine

智能正负压多工位热成型机



## 结构特点 / Major Construction Features

1. 欧洲设计，功能齐全，适合多样化的生产线，安全，高效，节能，卫生
2. 放卷工位电动抬料，双工位放卷，允许单人上料重达1T的卷材
3. 易于操作的人机界面，系统具有远程连接的功能
4. 快速且精准的温控系统（误差±1度），带有热炉检测物料及气源低压保护系统
5. 智能操作，整机带有配方储存，不停机自动调节功能
6. 可与国内外大多知名品牌的机型实现模具共用，零顾虑配合生产
7. 快速换模系统，可方便快速精准安全换模，减少机器停机时间
8. 任何成型方案下都可单独或同时使用夹棍和拉伸辅助功能，极大程度简化模具结构
9. 收缩性强的材质可采用单工位模内成型冲切功能，百分百保证模具切过精度
10. 高精度成型裁切技术，达到高速控制、低磨损的完美成型裁切性能
11. 堆垛工位可定制化，简化了复杂零件的堆垛，便于满足进一步的生产需求
12. 电柜优化设计，简化机器组装以及接线安装流程



## 主要技术参数 / Main Technical Parameters

机组型号	Model	FSCT820/650-2	FSCT820/650-3	FSCT820/650-4
工位个数	Qty of Stations	2	3	4
片材原料	Sheet Material	PPPS,PET,PVC,HIPS,PLA,OPS,EPS,C-PET,C-PLA,ABS		
成型合模力	Forming Clamping Force	750KN千牛		
冲切合模力	Punching Clamping Force	750KN千牛		
最大成型面积	Max.Forming Area	820x650mm		
最大成型深度与高度	Max.Pos/Neg Depth	150/150		
最大片材宽度	Max.Plastic Sheet Width	860mm		
最大片材卷径	Max.Sheet Roll Dia.	1100mm,1T		
片材厚度范围	Sheet Thickness Range	0.15-2mm		
最大空载速度	Max.No-Load Speed	65 Cycles/min		
空气压力/耗气量	Air Consumption	4.5m <sup>3</sup> /min,0.6-0.8Mpa		
总功率	Rated Power	185KW	200KW	215KW
外形尺寸	Dimension(LxWxH)	10000×2900×3150mm	11200×2900×3150mm	12500×2900×3150mm
重量	Weight	15T	20T	25T

▲注：数据如有更改，恕不另行通知 (Notes: If any change of data, we will not notify further)

1. European design, complete functions, suitable for diversified production lines, safe, efficient, energy-saving and hygienic
2. Unwinding station electric lifting, double roll holder, allow for single operator loading rolls up to 1T
3. Operator-friendly HMI, and the system has the function of remote connection
4. Fast and accurate temperature control system (error ± 1 degree), with hot furnace detection material drop and air source low pressure protection system
5. Intelligent operation, the whole machine is equipped with formula storage and automatic adjustment without shutdown
6. It can share molds with models of most well-known brands at home and abroad, and cooperate with existing production lines
7. Fast mold change system, which can facilitate fast, accurate and safe mold change and reduce machine downtime
8. Under any forming scheme, the clamping frame and plug assist function can be used alone or at the same time, greatly simplify the mold structure
9. Materials with strong shrinkage can adopt the single station in-mold-forming-cutting function to 100% ensure the edge cutting accuracy
10. High precision forming and cutting technology to achieve the perfect forming and cutting performance of high-speed control and low wear
11. The stacking station can be customized, which simplifies the stacking of complex parts and is convenient to meet further production needs
12. Optimize the design of electric cabinet and simplify the machine assembly and wiring installation process

# SY-680B SERIES

Automatic Thermoforming Machine

## 全自动热成型机



### 结构特点 / Major Construction Features

1. 机器的运行操作由PLC和触摸屏控制
2. 模具导轨采用四导柱导向保证模具合模精度
3. 链条架采用降温快，耐磨设计
4. 链条架退出安全换模系统，可大大降低换模难度
5. 加热炉5-6段加热，保证材料在热炉得到充分加热
6. 吹杯系统可调节吹杯角度和风量
7. 液压系统一体化设计，便于检修维护
8. 伺服拉伸系统品质保证，耐用不易坏
9. 操作简单，性能可靠，低噪音，高品质
10. 电柜一体化设计，简化机器组装以及接线安装流程

1. The operation of the machine is controlled by PLC and touch screen
2. The mold guide plate adopts four guide posts to ensure the mold clamping accuracy
3. The chain frame adopts fast cooling and wear-resistant design
4. The chain frame exits the safe mold change system, which can greatly reduce the difficulty of mold change
5. Heating in 5-6 sections of the heating furnace to ensure that the materials are fully heated in the heating furnace
6. The cup blowing system can adjust the cup blowing angle and air volume
7. Integrated design of hydraulic system to facilitate overhaul and maintenance
8. Servo stretching system, quality assurance, durable and not easy to break
9. Simple operation, reliable performance, low noise and high quality
10. Integrated design of electric cabinet to simplify machine assembly and wiring installation process

### 用途 / Usage

该系列主要用于生产各种一次性塑料杯，比如：饮水杯、果冻杯、酸奶杯，还有花盆，一次性碗，盖子，托盘及其他塑料制品。

This series mainly used for making different kinds of plastic cups, such as water drinking cups, jelly cups, yoghurt cups, coffee cups. It can also make flower pots, disposable bowls, lids, plates, trays and etc.

### 主要技术参数 / Main Technical Parameters

机组型号	Model	SY-680B I	SY-680B II	SY-680B III
最大成型面积	Max.Forming Area	650X320mm	650X320mm	650X320mm
最大空载速度	Max.Dry Cycle Speed	35Cycles/min	35Cycles/min	40Cycles/min
运行模式	Running Pattern	液压Hydraulic	液压Hydraulic	伺服电机Servomotor
送片模式	Feeding Pattern	数码电机Motor With Encode	伺服电机Servomotor	伺服电机Servomotor
拉伸模式	Stretching Pattern	气缸Air Cylinder	伺服电机Servomotor	伺服电机Servomotor
片材规格	Sheet Specification	THK: 0.2-2mm, W: Max.690mm		
最大成型深度	Max.Forming Depth.Sample Height	≤150mm 机械手(with robot), ≤170mm吹杯 (by blowing)		
最大片材卷径	Max.Sheet Roll Dia.	1100mm, 1T		
耗电量	Power Consumption	40Kw/h	45Kw/h	40Kw/h
总功率	Overall Power	131KW	137KW	137KW
外形尺寸	Dimension(LxWxH)	3600x1590x2500mm	3600x1590x2500mm	3600x1590x2500mm
重量	Weight	4.4T	4.5T	4.5T

▲注：数据如有更改，恕不另行通知 (Notes: If any change of data, we will not notify further)

# SY-750B SERIES

Automatic Thermoforming Machine

## 全自动热成型机



### 结构特点 / Major Construction Features

1. 机器的运行操作由PLC和触摸屏控制
2. 模具导板采用四导柱导向保证模具合模精度
3. 链条架采用降温快，耐磨设计
4. 链条架退出安全换模系统，可大大降低换模难度
5. 加热炉5-6段加热，保证材料在热炉得到充分加热
6. 吹风系统可调节吹风角度和风量
7. 液压系统一体化设计，便于检修维护
8. 伺服拉伸系统品质保证，耐用不易坏
9. 操作简单，性能可靠，低噪音，高品质
10. 电柜一体化设计，简化机器组装以及接线安装流程

1. The operation of the machine is controlled by PLC and touch screen
2. The mold guide plate adopts four guide posts to ensure the mold clamping accuracy
3. The chain frame adopts fast cooling and wear-resistant design
4. The chain frame exits the safe mold change system, which can greatly reduce the difficulty of mold change
5. Heating in 5-6 sections of the heating furnace to ensure that the materials are fully heated in the heating furnace
6. The cup blowing system can adjust the cup blowing angle and air volume
7. Integrated design of hydraulic system to facilitate overhaul and maintenance
8. Servo stretching system, quality assurance, durable and not easy to break
9. Simple operation, reliable performance, low noise and high quality
10. Integrated design of electric cabinet to simplify machine assembly and wiring installation process

### 用途 / Usage

该系列主要用于生产各种一次性塑料杯，比如：饮水杯、果冻杯、酸奶杯，还有花盆，一次性碗，盖子，托盘，托盒及其他塑料制品。

This series mainly used for making different kinds of plastic cups, such as water drinking cups, jelly cups, yoghurt cups, coffee cups. It can also make flower pots, disposable bowls, lids, plates, trays and etc.



### 主要技术参数 / Main Technical Parameters

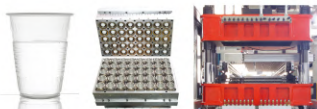
机组型号	Model	SY-750B I	SY-750B II	SY-750B III	SY-750B I H
最大成型面积	Max.Forming Area	750X450mm	750X450mm	750X450mm	750X450mm
最大空载速度	Max.Dry Cycle Speed	35Cycles/min	35Cycles/min	40Cycles/min	35Cycles/min
运行模式	Running Pattern	液压Hydraulic	液压Hydraulic	伺服电机Servomotor	偏心轮Eccentric wheel
送片模式	Feeding Pattern	步进电机Motor With Encode	伺服电机Servomotor	伺服电机Servomotor	变频电机Motor With Encode
拉伸模式	Stretching Pattern	气缸Air Cylinder	伺服电机Servomotor	伺服电机Servomotor	气缸Air Cylinder
片材规格	Sheet Specification	THK: 0.2-2mm, W: Max.780mm			
最大成型面积	Max.Forming Depth,Sample Height	≤130mm 机械手(with robot)		≤220mm 机械手(with robot)	
		≤150mm吹杯(by blowing)		≤240mm吹杯(by blowing)	
最大片材卷径	Max.Sheet Roll Dia.	1100mm,1T			
耗电量	Power Consumption	65Kw/h	65Kw/h	60Kw/h	65Kw/h
总功率	Overall Power	181KW	189KW	189KW	190KW
外形尺寸	Dimension(LxWxH)	4000x1730x2600mm			
重量	Weight	6.8T	7T	7T	8T

▲注：数据如有更改，恕不另行通知 (Notes: If any change of data, we will not notify further)

# SY-850B SERIES

Automatic Thermoforming Machine

## 全自动热成型机



### 结构特点 / Major Construction Features

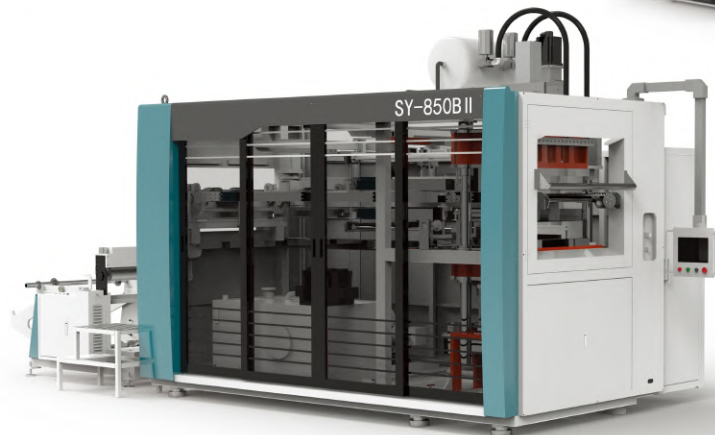
1. 机器的运行操作由PLC和触摸屏控制
2. 模具导板采用四导柱导向保证模具合模精度
3. 链条架采用降温快，耐磨设计
4. 链条架退出安全换模系统，可大大降低换模难度
5. 加热炉5-6段加热，保证材料在热炉得到充分加热
6. 吹杯系统可调节吹杯角度和风量
7. 液压系统一体化设计，便于检修维护
8. 伺服拉伸系统品质保证，耐用不易坏
9. 操作简单，性能可靠，低噪音，高品质
10. 电柜优化设计，简化机器组装以及接线安装流程

1. The operation of the machine is controlled by PLC and touch screen
2. The mold guide plate adopts four guide posts to ensure the mold clamping accuracy
3. The chain frame adopts fast cooling and wear-resistant design
4. The chain frame exits the safe mold change system, which can greatly reduce the difficulty of mold change
5. Heating in 5-6 sections of the heating furnace to ensure that the materials are fully heated in the heating furnace
6. The cup blowing system can adjust the cup blowing angle and air volume
7. Integrated design of hydraulic system to facilitate overhaul and maintenance
8. Servo stretching system, quality assurance, durable and not easy to break
9. Simple operation, reliable performance, low noise and high quality
10. Optimize the design of electric cabinet and simplify the machine assembly and wiring installation process

### 用途 / Usage

该系列主要用于生产各种不同种类的塑料花盆、托、盘、碗、杯等其他塑料包装制品。

This series mainly used for making different kinds of plastic flower pots, trays, plate, bowl, cups and other plastic packaging products.



### 主要技术参数 / Main Technical Parameters

机组型号	Model	SY-850B II	SY-850B III
最大成型面积	Max Forming Area	850*550mm	850*550mm
最大空载速度	Max.No-Load Speed	30Cycles/min	40 Cycles/min
运行模式	Running Pattern	液压Hydraulic	伺服电机Servomotor
送片模式	Feeding Driven	数码电机Motor With Encode	
拉伸模式	Stretching Pattern	伺服电机Servomotor	
片材规格	Sheet Specification	THK: 0.2-2mm, W: Max.870mm	
最大成型深度	Max Forming Depth, Sample Height	≤140mm 机械手(with robot), ≤160mm吹杯(by blowing)	
最大片材卷径	Max Sheet Roll Dia.	1100mm, TT	
耗电量	Electrical Consumption	90kw/h	80 kw/h
总功率	Overall Power	215kw	215kw
外形尺寸	Dimension(LxWxH)	L4200*W1970*H3100	L4200*W1970*H3100
重量	Weight	8T	8T

▲注：数据如有更改，恕不另行通知 (Notes: If any change of data, we will not notify further)

# SY-PC-A SERIES

Diagonal Mono-Layer Plastic Sheet Extruder

## 斜式单层塑料片材挤出机

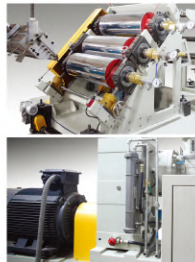
### 结构特点 / Major Construction Features

1. 该系列单层塑料片材挤出机是由挤出机、压延、牵引、收卷机一体机、电气控制柜组成。
2. 螺杆、料筒、换网器、模头等主要部件采用优质合金钢 (38CrMoAlA) 并经氮化处理, 具有硬度高, 耐腐蚀, 使用寿命长等优点。
3. 螺杆采用大长径比, 塑化均匀, 塑化能力好。
4. 换网器采用液压双换网装置, 无需停机换网, 操作便捷, 提高生产效率。
5. 机筒压延、牵引、收卷部分 (包括废边收卷) 采用整体设计, 外形美观, 安装调试方便快捷。
6. 挤出机架采用方形钢, 机器运行更加稳定; 马达和齿轮箱采用直联方式, 提高生产效率。

注: 特殊产品可按要求定做!

1. The sheet extrusion unit is a combination of extruder, three roll calenders, haul-off unit, winder (including waste sheet winder) and electric control cabinet.
2. The main parts, such as screw, barrel, screen exchanger, T-die adopt superior alloy steel (38 CrMoAlA) with high hardness, strong corrosion resistance and long operating life after nitrogen treatment.
3. The screw adopts big L/D ratio, equal plasticization and high plasticizing capability.
4. Non-stop fast screen changer with double-sieve, controlled by hydraulic device, the operation is convenient and improve the production efficiency.
5. The calendar, haul off unit and winder adopt integration design, fine appearance, convenient and improve the production efficiency.
6. The machine frame adopt square steel, to make sure the machine works stably in high speed. The motor is connected with gear box directly, improve production efficiency and lower energy consumption.

Note: Special specification and configuration of products can be designed according to customer's demand.



### 用途 / Usage

该系列片材机适用于生产单层共挤聚丙烯 (PP)、聚乙烯 (PE)、聚苯乙烯 (HIPS) 等片材用于制作塑料饮料杯、蛋糕杯、酸奶杯、盖子、碟子、包装盒等包装容器的塑料片材。

This series is designed to produce mono-layer PP/PS/PE/HIPS plastic sheet, which is used for making disposable water drinking cups, ice-cream cups, yoghurt cups, lids, trays, plates and etc.

### 主要技术参数 / Main Technical Parameters

机组型号	Model	SY-PC-90-A	SY-PC-110-A	SY-PC-120-A
生产原料	Raw Material	PP,PS,HIPS,PE	PPPS,HIPS,PE	PP,PS,HIPS,PE
片材厚度	Sheet Thickness	0.3-2mm	0.3-2mm	0.3-2mm
分层数	Layer	1	1	1
最大挤出	Extrusion Capacity	100kg/h	200kg/h	250kg/h
螺杆直径	Screw Dia.	90mm	110mm	120mm
长径比	L/D Ratio	33:1	33:1	33:1
辊筒外径	Roller Dia.	Φ350mm x 3	Φ350mm x 3	Φ400mm x 3
主电机功率	Main Motor Power	37kw	55kw	110kw
总功率	Overall Power	90kw	120kw	160kw
重量	Weight	5.5T	7T	8T

▲注: 数据如有更改, 恕不另行通知 (Notes: If any change of data, we will not notify further)

# SY-PC-C Series

Diagonal And Horizontal Mono-Layer Plastic Sheet Extruder

## 斜卧式单层片材挤出机

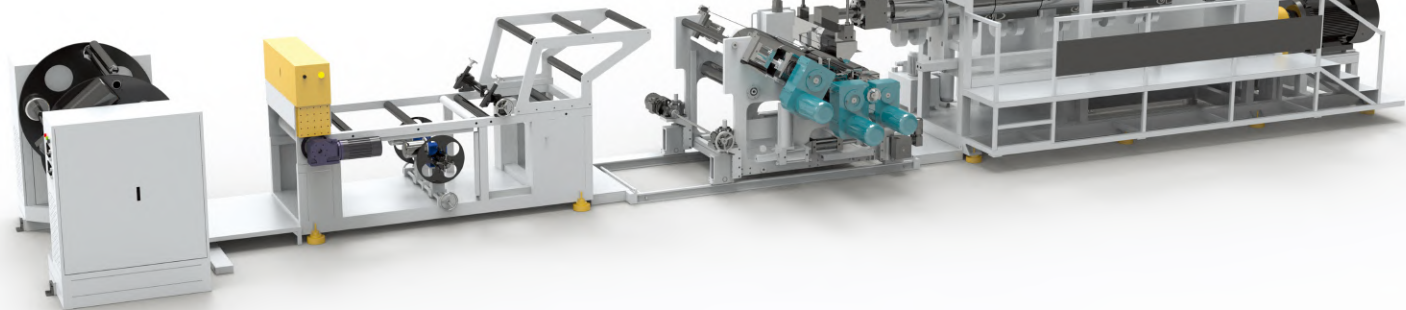
### 结构特点 / Major Construction Features

1. 适用于PP、HIPS、GPPS、PE单层片材生产
  2. 螺杆采用大长径比，塑化均匀，塑化能力好
  3. 该机组采用先进不停机液压快速换网装置，操作方便，性能优越，提高了生产效率
  4. 高精度分配器，衣架式喷头，保证出模流体截面的流速及压力均匀
  5. 压延辊采用蜗轮传动调节，操作方便，精度高
  6. 超镜面压光辊，辊筒表面温度均匀，使生产的片材厚薄均匀，质量高
- 注：特殊产品可按照要求定做！



1. It is mainly used in producing mono-layer plastic PP,HIPS,PS,PE sheet
2. The screw adopts big L/D (Length/ diameter) Ratio,equal plasticization and high plasticizing capability
3. Non-stop fast screen changer,controlled by hydraulic device,improves the production efficiency and operation is convenient.
4. High precision distributor,cloth-rack T-die,constant flowing speed and force uniform
5. Pressing roller uses worm wheel to adjust,the operation is convenient and high precision
6. Roller adopt precision mirror polishing,the heating temperature of the roller in the surface is equal,to make sure the sheet has even thickness,high quality.

Note:Spetical specification and configuration of products can be designed according to customers' demand.



### 主要技术参数 / Main Technical Parameters

机组型号	Model	SY-PC-90-C	SY-PC-110-C	SY-PC-120-C
生产原料	Raw Material	PP,PS,HIPS,PE	PPPS,HIPS,PE	PPPS,HIPS,PE
片材厚度	Sheet Thickness	0.15-1.5mm	0.15-1.5mm	0.15-1.5mm
分层数	Layer	1	1	1
最大挤出	Extrusion Capacity	100kg/h	200kg/h	250kg/h
螺杆直径	Screw Dia.	90mm	110mm	120mm
长径比	L/D Ratio	33:1	33:1	33:1
辊筒外径	Roller Dia.	Φ350mm x 3	Φ350mm x 3	Φ320+Φ450mm x 2
主电机功率	Main Motor Power	37kw	55kw	110kw
总功率	Overall Power	90kw	120kw	160kw
重量	Weight	5.5T	7T	8T

▲注：数据如有更改，恕不另行通知 (Notes: If any change of data, we will not notify further)

# SY-SPC SERIES

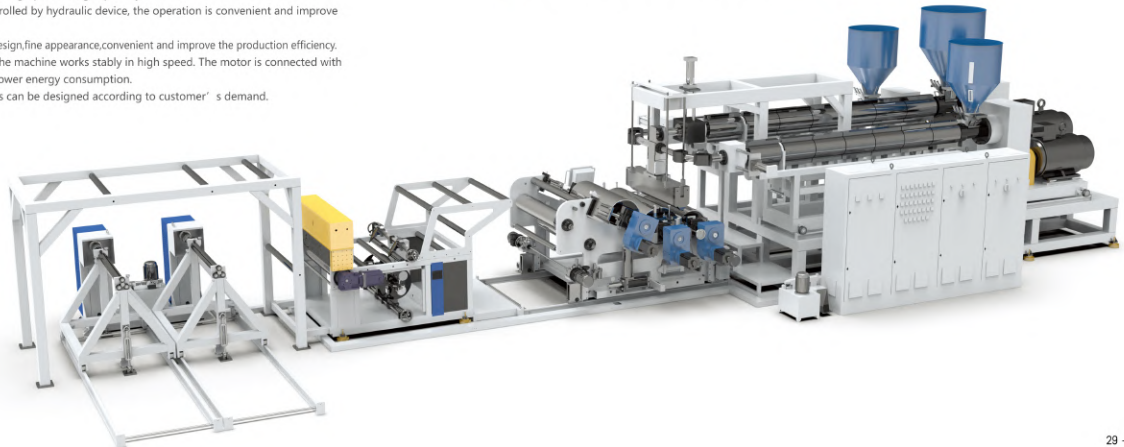
Diagonal Multi-Layer Plastic Sheet CO-Extruder

## 斜式多层共挤塑料片材机

### 结构特点 / Major Construction Features

1. 该系列单层塑料片材挤出机组是由挤出机、压延、牵引、收卷机一体机、电气控制柜组成。
  2. 螺杆、料筒、换网器、模头等主要部件采用优质合金钢（38CrMoAlA）并经氮化处理，具有硬度高，耐腐蚀，使用寿命长等优点。
  3. 螺杆采用大长径比，塑化均匀，塑化能力好。
  4. 换网器采用液压双换网装置，无需停机换网，操作便捷，提高生产效率。
  5. 机筒压延、牵引、收卷部分（包括废边收卷）采用整理设计，外形美观，安装调试方便快捷。
  6. 挤出机架采用方形钢，机器告诉运行更加稳定；马达和齿轮箱采用直联方式，提高生产效率。
- 注：特殊产品可按要求定做！

1. The sheet extrusion unit is a combination of extruder, three roll calenders, haul-off unit, winder (including waste sheet winder) and electric control cabinet.
  2. The main parts, such as screw, barrel, screen exchanger, T-die adopt superior alloy steel (38 CrMoAlA) with high hardness, strong corrosion resistance and long operating life after nitrogen treatment.
  3. The screw adopts big L/D ratio, equal plasticization and high plasticizing capability.
  4. Non-stop fast screen changer with double-sieve, controlled by hydraulic device, the operation is convenient and improve the production efficiency.
  5. The calendar, haul off unit and winder adopt integration design, fine appearance, convenient and improve the production efficiency.
  6. The machine frame adopt square steel, to make sure the machine works stably in high speed. The motor is connected with gear box directly, improve production efficiency and lower energy consumption.
- Note: Special specification and configuration of products can be designed according to customer's demand.



### 用途 / Usage

本机适用于生产双层共挤聚丙烯（PP）、聚乙烯（PE）、聚苯乙烯（PS）、等用于制作饮料杯、雪糕杯、酸奶杯、盖子、碟子、包装盒等包装容器的塑料片材。

This machine mainly for producing PP/PS/PE double-layer plastic sheet, which is used for making disposable water drinking cups, ice-cream cups, yoghurt cups, lids, dishes, plates and etc.

### 主要技术参数 / Main Technical Parameters

机组型号	Model	SY-SPC-100-70	SY-SPC-110-80	SY-SPC-120-90	SY-SPC-120-90-65
生产原料	Raw Material	PP,HIPS,PE	PP,HIPS,PE	PP,HIPS,PE	PP,HIPS,PE
片材厚度	Sheet Thickness	0.3-2mm	0.3-2mm	0.3-2mm	0.3-2mm
分层数	Layer	2-3(AB/ABA)	2-3(AB/ABA)	2-3(AB/ABA)	4-5(ABCA/ABCBA)
最大挤出量	Extrusion Capacity	180kg/h	250kg/h	350kg/h	350kg/h
主/副螺杆直径	Main/Auxiliary Screw Dia.	Φ100/70mm	Φ110/80mm	Φ120/90mm	Φ120/90/65mm
长径比	L/D Ratio	33:1	33:1	33:1	33:1
主/副电机功率	Main/Auxiliary Motor	45/30kw	55/37kw	110/45kw	110/45/22kw
总功率	Overall Power	130kw	180kw	220kw	270kw
重量	Weight	10T	13T	18T	21T

▲注：数据如有更改，恕不另行通知。(Notes: If any change of data, we will not notify further)



# SY-PET SERIES

APET,PETG,CPET,PLA Single-Layer Or Multi-Layer Sheet Extrusion Line

## APET,PETG,CPET,PLA单层及多层共挤片材机生产线

### 用途 / Usage

是目前国内技术最先进、工艺最成熟、设备最稳定的片材生产线之一，与国内同类设备相比，综合效能高30%以上，此生产线同时也可用于生产PS、PP、PE等片材制品。

It's one of the most advanced production lines with matured technology and stability in China. Compared with other same kind equipment, it's over 30% higher in overall efficiency. Line is suitable for PS, PP, PE sheet as well.

### PETG片材 / PETG sheet

PETG俗称低温PET,产品具有高光泽、高透明、有优良的阻隔性、自粘性的新型环保包装材料,可用于胶水粘合、高频波加工。

PETG is called low temperature PET, it's a new environment-friendly packing material with features such as high luster, good transparency, excellent barrier property, self-adhesion, which is used for glue bonding and high-frequency processing.

### CPET片材 / CPET sheet

CPET是一种改性PET,具有耐高温的特性,通常用于微波炉烤盘等。

CPET is a kind of modified PET with good resistance to high temperature, it is usually used for package in microwave oven.

### PET立体光栅片 / PET stereoscopic optical grating sheet

广泛适用于化妆品、药品、烟酒包装及一般商品等三维防伪外包装以及文具、挂件、宣传广告、海报、各式卡片、吊卡等领域。

It can be used as top grade package for cosmetics, medicine, tobacco & alcohol and common goods such as stationery, advertisements, posters and all kinds of cards.

### PLA片材 / PLA sheet

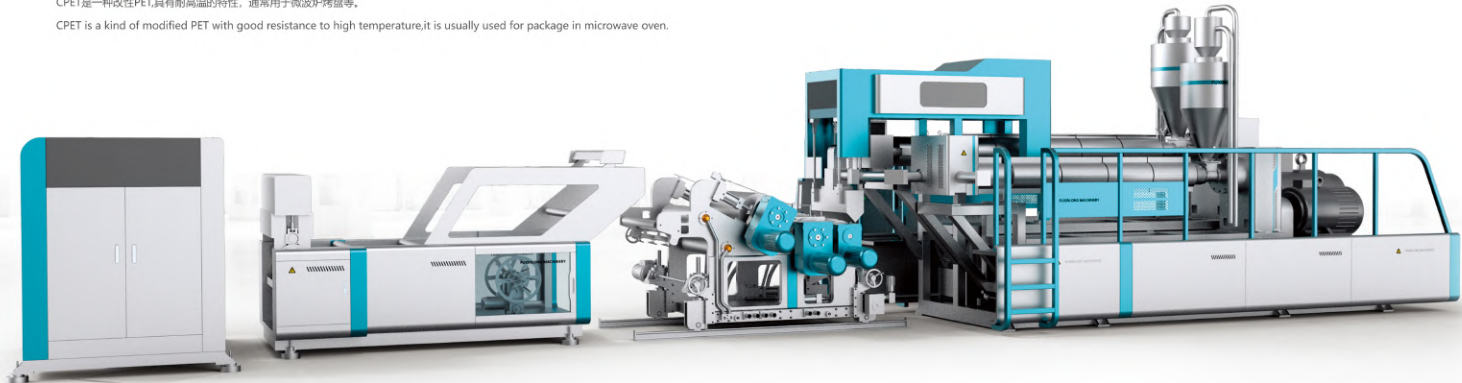
聚乳酸PLA是可降解树脂,可用于水果、蔬菜、鸡蛋、熟食和烘烤食品的硬包装,也可用于三明治、饼干和鲜花等商品的包装。

PLA is a kind of line shape aliphatic polyesters. PLA can be used in rigid package of fruits, vegetables, eggs, cooked food and roast food, also can be used for packaging of sandwich, biscuit and some other packages like fresh flower.

### 主要技术参数 / Main Technical Parameters

机器型号	Model	SY-PET-75/40D	SY-PET-85/40D	SY-PET-85/40DH
螺杆模式	Screw Mode		平行双螺杆Twin Screw	
片材厚度	Sheet Thickness		0.15-1.5mm	
挤出量范围	Max. Extrusion Capacity	500kg/h	600kg/h	800kg/h
主电机功率	Main Motor Power	132kw	160kw	220kw
电源	Power Supply	380V/50HZ/3P 三相四线 Three Phase Four Wires		

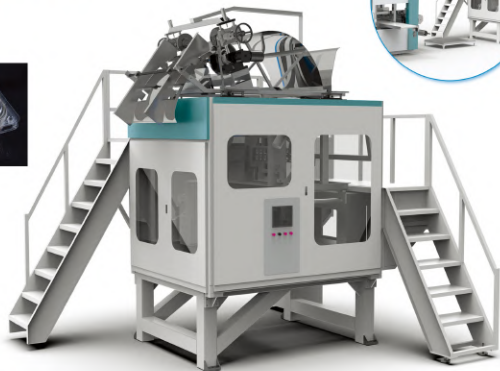
▲注:数据如有更改,恕不另行通知。(Notes: If any change of data, we will not notify further.)



# SY-HC

Side Punching Machine

## 侧冲机



### 用途 / Usage

本机冲剪采用伺服电机带动减速机、偏心轮连杆机构，PLC可编程控制和自动堆叠等先进技术，具有操作方便、效率高、噪音低、传动平稳等特点。可广泛应用于生产各类吸塑包装容器制品，如蓝毒盒、果冻杯、水杯、面碗、方盒、盖等，相对传统液压冲压具有更多的生产优势。

This machine adopts servo motor to drive reducer, eccentric connecting rod mechanism, PLC programmable control and automatic stacking and other advanced technologies. It has the characteristics of convenient operation, high efficiency, low noise and stable transmission. It can be widely used to produce all kinds of Blister packaging container products, such as blueberry box, jelly cup, water cup, noodle bowl, square box, cover, etc. Compared with the special hydraulic punching machine, it has more production advantages.

### 主要技术参数 / Main Technical Parameters

最大冲切面积	Max. Cutting area	900×400mm
最大冲载速度	Max Punching speed	120cycle/min
冲切产品最大高度	Maximum height of punching products	150mm
片材厚度范围	Thickness range of sheet	0.2-2.5mm
片材最大宽度	Maximum width of sheet	1000mm
主机功率	Main power	18 Kw
最大冲切力	Max. cutting force	11.5T 设计值
外型尺寸	Dimension	4165×3835×3880 mm
总重量	Weight	About 7.5T

▲注：数据如有更改，恕不另行通知。(Notes: If any change of data, we will not notify further.)

# SY-400A/420S

Automatic Plastic Lid Thermoforming Machine

## 全自动塑料杯盖成型机



### 用途 / Usage

主要适用于HIPS、PS、PVC、PET等塑料片材的成型生产各种小型调羹、碟盖，如医药剂托盒口服液托盘，咖啡杯、可乐杯盖等。This machine is specially designed for making different kinds of lids for plastic/paper cups, mini soup spoons, trays for medicine and etc.

### 主要技术参数 / Main Technical Parameters

型号	Model	SY-400A	SY-420S
材料	Used Material	HIPS, PS, PVC, PET	HIPS, PS, PVC, PET
生产速度	Running Speed	8-32次/分(Times/min)	8-32次/分(Times/min)
行程范围	Travel Range	50-160mm	50-160mm
最大成型深度	Max.Forming Depth	32mm(加深型52mm)	52mm
最大成型面积	Max.Forming Area	400x160mm	420x300mm
模具冷却	Mould Cooling	自来水或循环水60升/小时 Tap Water of Circulating Water 60L/h	
电源总功率	Total Power	4.6KW	10KW
耗气量	Air Consumptions	>0.3 M/Min	>0.5 M/Min
气压	Air Pressure	0.4-0.7Mpa	0.5-0.7Mpa
外形尺寸	Overall Dimensions	2700x830x1450mm	3500x1000x1700mm
重量	Weight	850kg	1200kg

▲注：数据如有更改，恕不另行通知。(Notes: If any change of data, we will not notify further.)

# SY-PH-2R

Preheating System

预热箱



## 用途 / Usage

SY-PH-2R 预热系统是针对热塑性材料的预加热，尤其是对聚丙烯（PP）材料的加热。采用YPH系统效果突出。这种独立的预热系统可以应用到任何成型机的前道工序中，快速加热及均匀的热分布是YPH系统最显著的特征。

SY-PH-2R Preheating used for heating thermoplastic material, especially polypropylene (PP) material, with fast heating and uniform heat distribution, this outstanding independent preheating system can be applied to any thermoforming machine.

## 主要技术参数 / Main Technical Parameters

片材最大宽度	Max.Sheet Width	900mm
片材最大厚度	The Maximum Thickness of The Sheet	0.4-2.5mm
片材预热有效长度	Effective Sheet Preheating Length	3500mm
辊筒直径	Roller Dia.	510mm
加热辊筒数量	Roller Qty.	2pcs
辊筒最高温度	Max.Temperature Roller	140°
片材表面最大温度	Max.Temperature Sheet Surface	90°
最大线速度	Max.Speed	28m/min
总加热功率	Total Heating Power	30kw
机器重量	Weight	1600kg

▲注：数据如有更改，恕不另行通知。(Notes: If any change of data, we will not notify further)

# SY-6B

Six-color Curved Surface Offset Printer

六色曲面胶印机



## 主要技术参数 / Main Technical Parameters

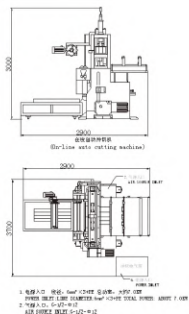
最大印刷长度	杯身斜度	最大印刷速度	杯缘口径	杯身高度	总功率	外形尺寸
Max Printing length	Max cup body slope	Max. Printing Speed	Cup Rim Dia.	Cup body depth	Total power	Dimension
160mm	5-15degree	300-400cups/min	Dia.50-180mm	30-180mm	20kw	6200×2500×2660mm

▲注：数据如有更改，恕不另行通知。(Notes: If any change of data, we will not notify further)

# SY-1050/320

On-line Auto Cutting Stacking Machine

在线自动冲切堆叠机



# SY-CJ Series

Hydraulic Punching Machine

液压裁断机



主要技术参数 / Main Technical Parameters

型号 Model	SY-CJ25T	SY-CJ30T	SY-CJ1100 x 2	SY-CJ1200 x 2	SY-CJ1400 x 2	SY-1050/320
有效冲切面积 Punching Area	500 x 1600mm	500 x 1600mm	1100 x 1250mm	1200 x 1250mm	1400 x 800mm	1050 x 320mm
冲切高度 Punching Height	50-150mm	50-150mm	150mm	150mm	200mm	150mm
冲切速度 Punching Speed	4-8秒/模 (s/mould)	4-8秒/模 (s/mould)	4-8秒/模 (s/mould)	4-8秒/模 (s/mould)	4-12秒/模 (s/mould)	0.8-3秒/模 (s/mould)
冲切压力 Punching Pressure	25T (2-Pillar)	30T (2-Pillar)	100T	120T	130T	7T
装机功率 Total Power	3kw	3kw	11kw	11kw	11kw	10kw
净重 Weight	1.2T	1.5T	4.8T	5T	5.6T	3.5T
尺寸 Dimension	2070x990x1860mm	2070x990x1860mm	2260x1380x2500mm	3800x1500x2600mm	2760x1850x1670mm	2900x3700x3000mm
电源 Power Supply	380V50Hz Tri-phase, Four Wire 三相、四线					

▲注：数据如有更改，恕不另行通知 (Notes: If any change of data, we will not notify further)

Auxiliary Equipments

辅助设备

## SY-JXS

Intelligent stacking robot

智能堆叠机械手



## SY-135JB

Plastic Cup Rim Curling Machine

塑料杯口卷边机



## SY-72DS

Automatic Side Sent Cup Stacker

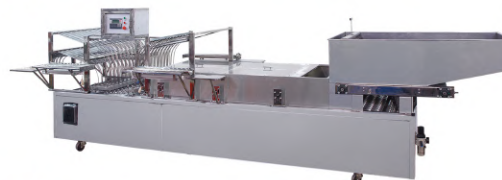
全自动横送叠杯机



## SY-KS

Jelly Cup Stacker

果冻理杯机



## SY-450

Automatic Cup Counting & Packing Machine

全自动塑料杯计数包装机



SAYEAH 新景 瑞宝元

Auxiliary Equipments  
辅助设备



AC-3PC  
cooling chiller  
冷水机



SY-15T  
Water Cooling Tower  
冷水塔



L/G-3/8  
Screw Air Compressor  
螺杆空压机



SY-800IC  
On-Line Crusher  
连线粉碎机



SY-180IC  
On-Line Crusher  
片材在线粉碎机



SY-650  
Crusher  
强力粉碎机



SY-1.5T  
Manual-Operated Hydraulic Lifter  
液压叉车



SY-E2T  
Electric Lifter  
电动叉车



SY-110  
Mixer  
搅拌机



SY-300  
Autoloader  
自动上料机



SY-VM  
Big Vertical Mixer  
大型立式混色机

